

NEW YORK CITY SCHOOL  
CONSTRUCTION  
AUTHORITY

Sharon L. Greenberger, MCP, President and CEO  
Board of Trustees  
Cancellor Joel I. Klein, Chairman  
Stanley E. Capron, Trustee  
Lillian Baruch-Park, Trustee  
Architecture & Engineering  
E. Bruce Barrett, P.A., Vice President  
Bar R. Albert, P.E., Director of Design Studio 1  
Stanley Dahir, Director of Design Studio 2  
Mina A. Gomez, P.E., Director of Design Studio 3  
George D. Roussey, P.E., Director of  
Technical Standards & Support Studio  
Beatriz Casarino, Director of Operations Support



36 West 29th Street, 16 E./New York, NY 10010  
P 212/242/3735 / F 212/242/2740

LAWLESS & MANGIONE

ARCHITECTS & ENGINEERS

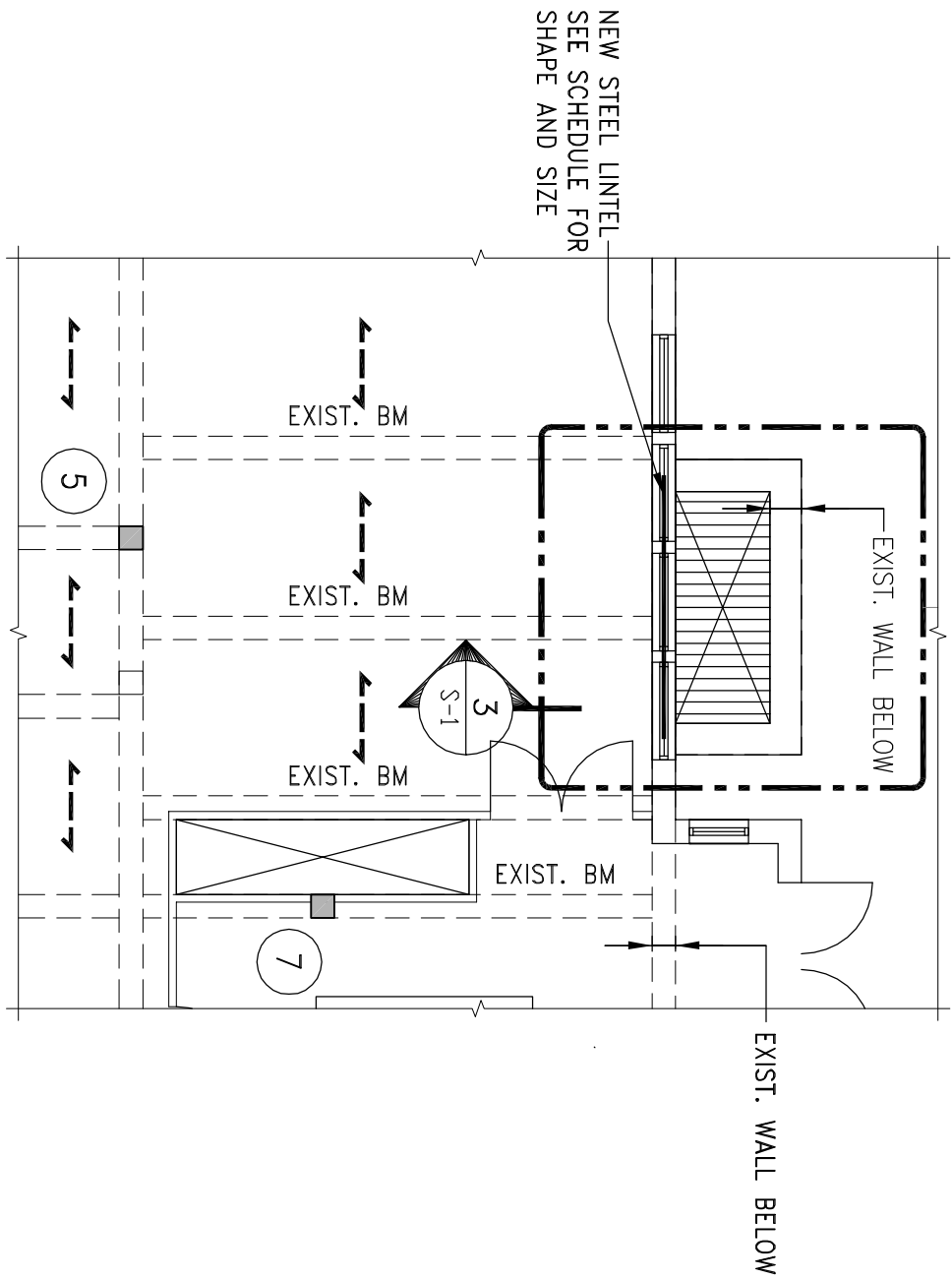
480 NORTH BROADWAY YONKERS, N.Y. 10701  
914/949-0600  
914/949-422-888



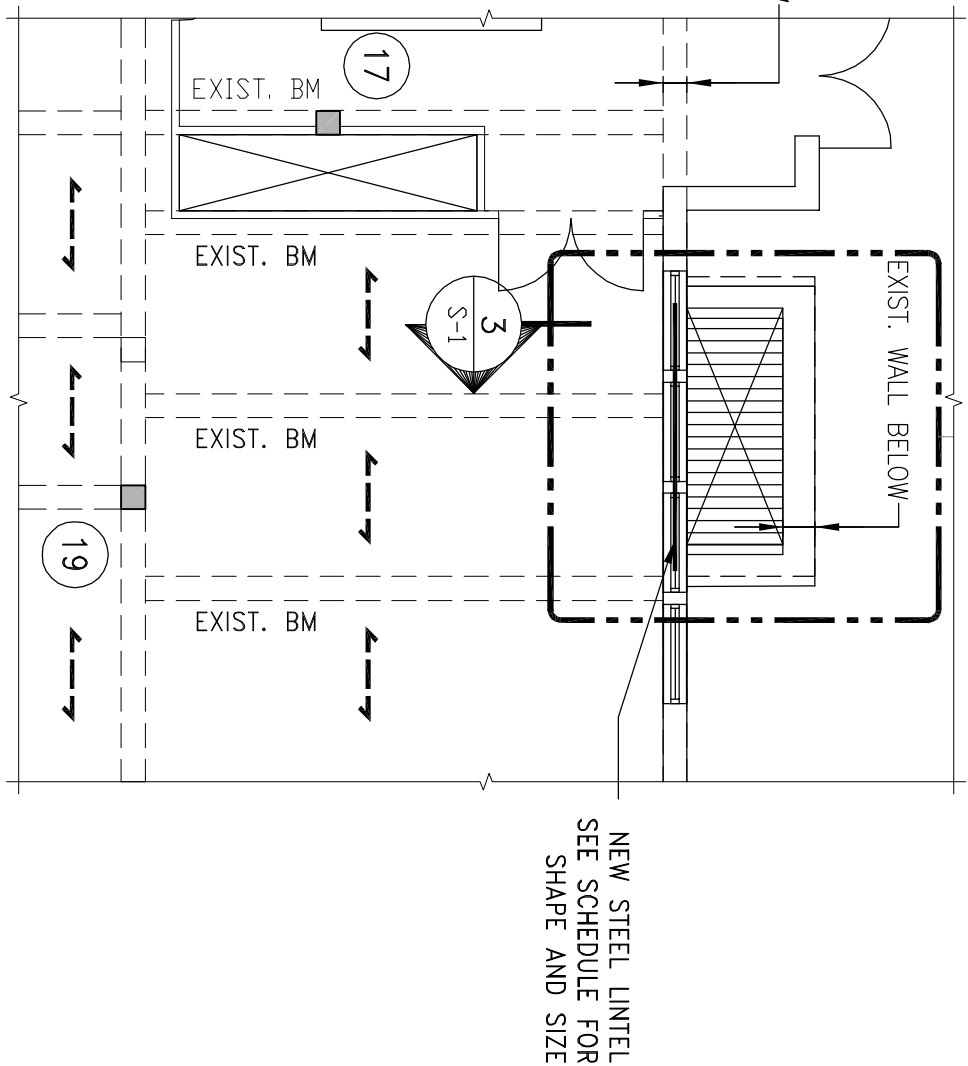
238 EAST 63TH STREET NEW YORK, NEW YORK 10022  
TEL: 212/687-2988 FAX: 646-487-5601 WWW.CANTORSEINUK.COM

NEW YORK CITY SCHOOL  
CONSTRUCTION  
AUTHORITY

Sharon L. Greenberger, MCP, President and CEO  
Board of Trustees  
Cancellor Joel I. Klein, Chairman  
Stanley E. Capron, Trustee  
Lillian Baruch-Park, Trustee  
Architecture & Engineering  
E. Bruce Barrett, P.A., Vice President  
Bar R. Albert, P.E., Director of Design Studio 1  
Stanley Dahir, Director of Design Studio 2  
Mina A. Gomez, P.E., Director of Design Studio 3  
George D. Roussey, P.E., Director of  
Technical Standards & Support Studio  
Beatriz Casarino, Director of Operations Support



1 PART PLAN  
SCALE: 1/2"=1'-0"



2 PART PLAN  
SCALE: 1/2"=1'-0"

STRUCTURAL STEEL NOTES:

1. STRUCTURAL STEEL HAS BEEN DESIGNED IN ACCORDANCE WITH THE NEW YORK CITY BUILDING CODE. ALL STEEL ANGLES & PLATES SHALL BE ASTM A36 OR ASTM A572 GR-50, HAVING A MINIMUM YIELD OF 50,000 PSI U.O.N.
2. AISC SPECIFICATIONS FOR "ALLOWABLE STRESS DESIGN (ASD)" FOR STRUCTURAL STEEL IN BUILDINGS" - LATEST EDITION SHALL APPLY, EXCEPT AS MODIFIED BY THE NOTES. SCHEDULES AND DETAILS SHOWN ON THE STRUCTURAL DRAWINGS OR ANY RESTRICTIVE REQUIREMENTS OF THE NEW YORK CITY, BUILDING CODE.
3. THE EXISTING FRAMING AND INTERACTION WITH THE NEW FRAMING AS SHOWN ON THE DRAWINGS ARE BASED ON EXISTING ARCHIVED DRAWINGS. CONTRACTOR SHALL VERIFY ALL EXISTING CONDITIONS IN THE FIELD AND BE RESPONSIBLE FOR COORDINATION. DISCREPANCIES SHALL BE REPORTED TO THE ARCHITECT AND ENGINEER BEFORE PROCEEDING.

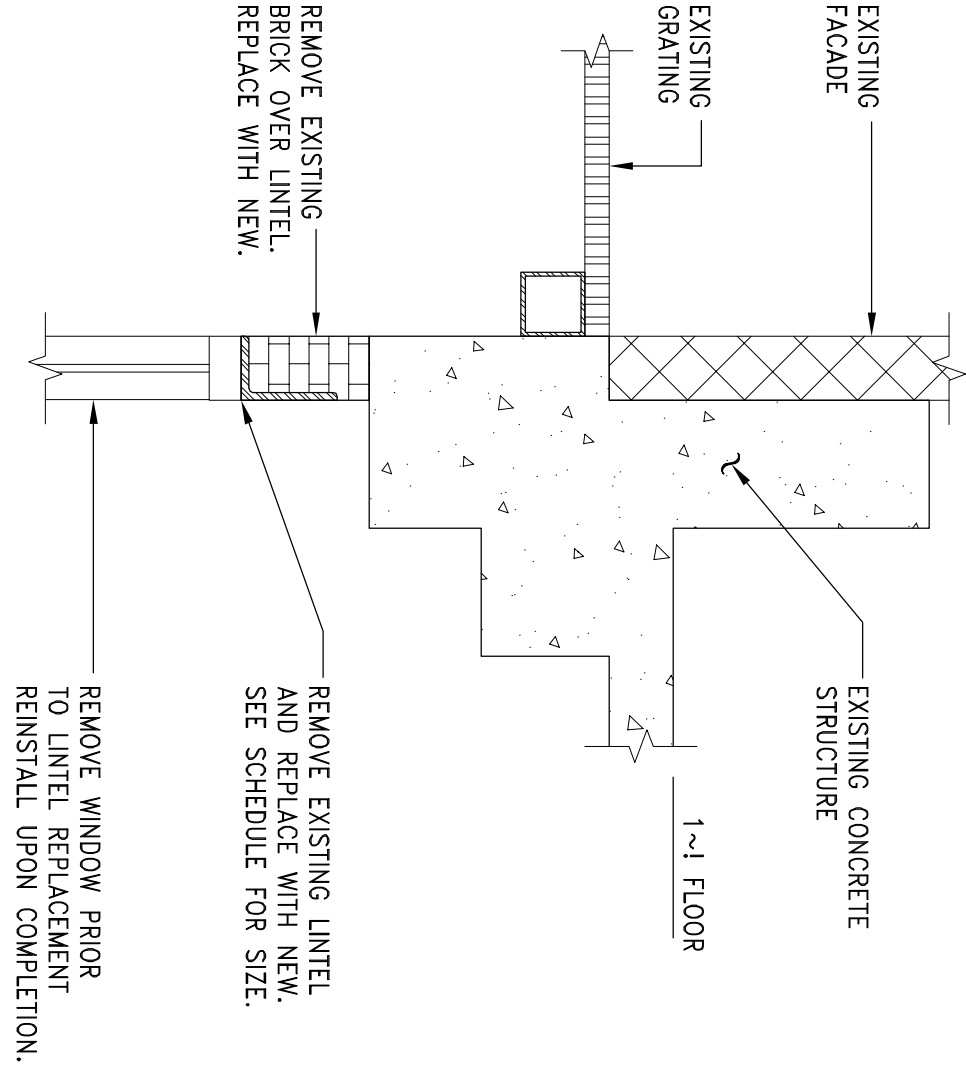
CONCRETE AND STEEL REINFORCEMENT NOTES:

1. ALL CONCRETE SHALL BE NORMAL WEIGHT CONTROLLED CONCRETE, U.O.N., AND COMPLY WITH A.C.I. BUILDING CODE AND THE CURRENT NEW YORK CITY BUILDING CODE.
2. ALL STEEL REINFORCEMENT SHALL HAVE AN ULTIMATE TENSILE STRENGTH OF 90,000 PSI AS PER A.S.T.M. A615 GRADE 60. THE CONTRACTOR SHALL FURNISH AND INSTALL ALL THE NECESSARY CHAIRS, REBARS, TIES, SPACERS, ETC., TO SECURE AND SUPPORT THE REINFORCING WHILE PLACING THE CONCRETE.
3. THE CONTRACTOR MUST SUBMIT REINFORCING SHOP DRAWINGS TO THE STRUCTURAL ENGINEER FOR REVIEW.
4. THE STRUCTURAL ENGINEER IS TO BE STARTED UNTIL THE SHOP DRAWINGS ARE REVIEWED BY THE ENGINEER. THE STRUCTURAL ENGINEER OR HIS FIELD QUALIFIED REPRESENTATIVE MUST CHECK AND APPROVE ALL STEEL REINFORCING PRIOR TO CONCRETE PLACEMENT.

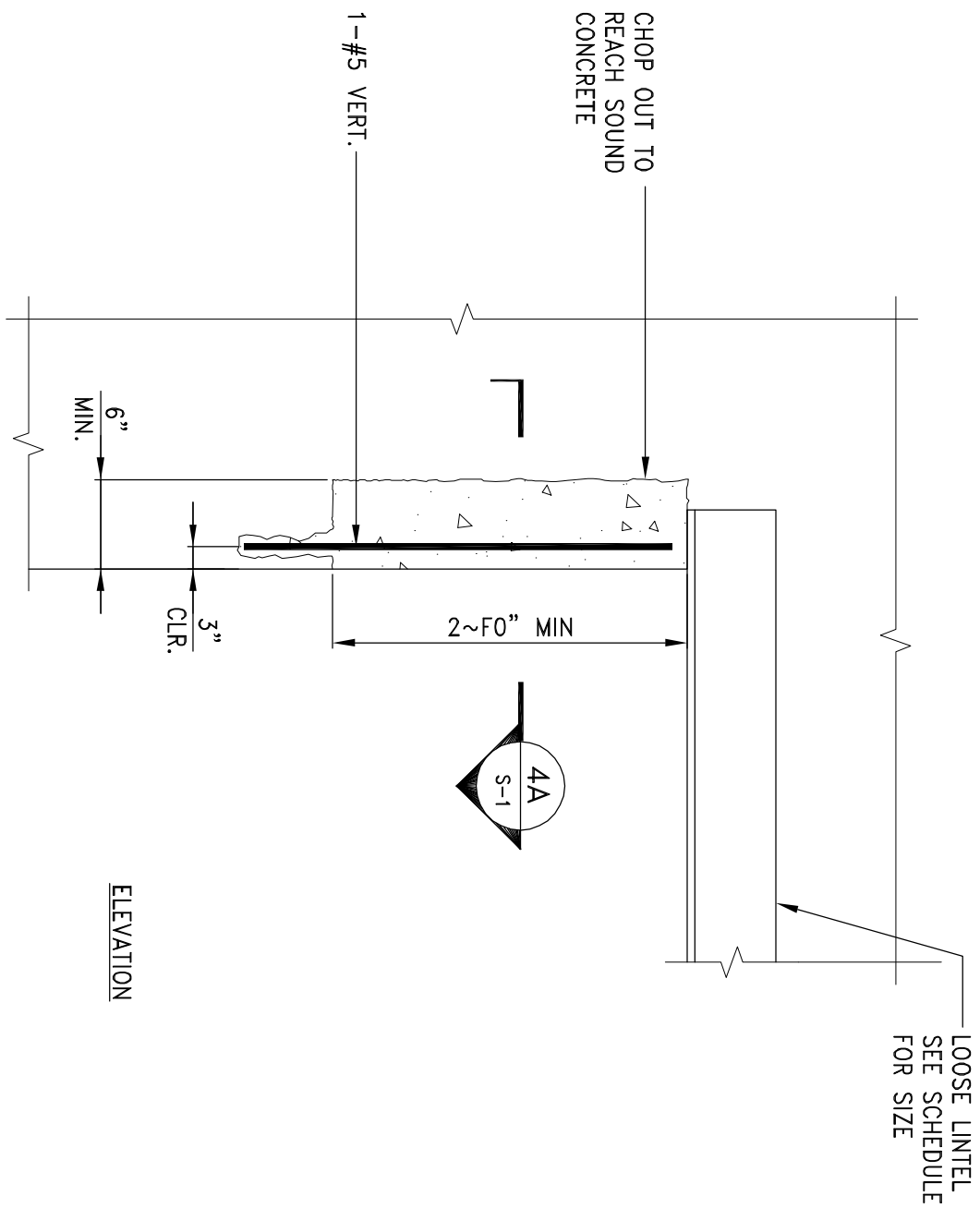
LOOSE UNTEL SCHEDULE	
MASONRY OPENING	L SIZE FOR EACH 4" THICKNESS OF MASONRY
3'-7 1/2" TO 6'-0"	L 4"X4"X~5"
6'-0" TO 10'-0"	L 6"X4"X~5"
10'-0" TO 12'-0"	L 7"X4"X~5"

NOTE:

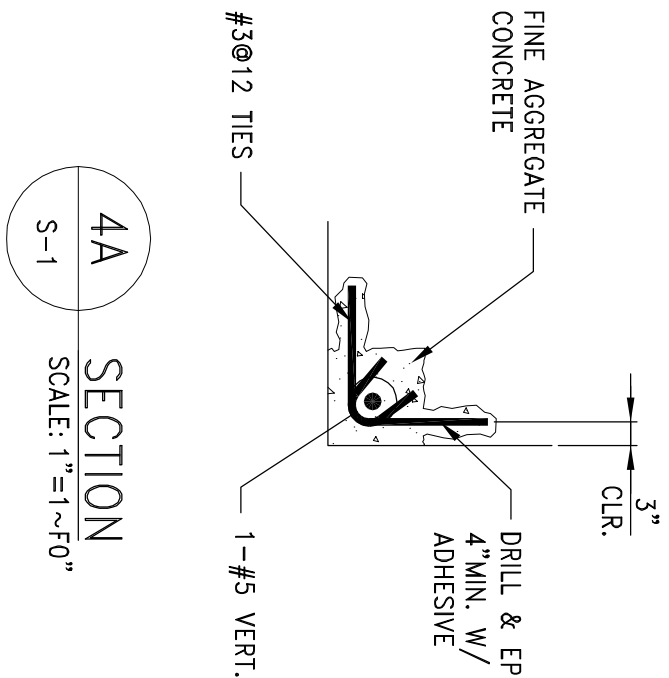
1. L.L. LENGTH = M.O. + 0'-18" (4" EACH END).
2. PROVIDE OVERPROOTING ON L.L. WHEN M.O. IS GREATER THAN 4'-0".
3. NO JOINTS ARE TO OCCUR OVER M.O.
4. WELD 1 STEP ABOVE & BELOW UNTEL BEAM EACH END.



3 SECTION  
SCALE: 1"=1'-0"

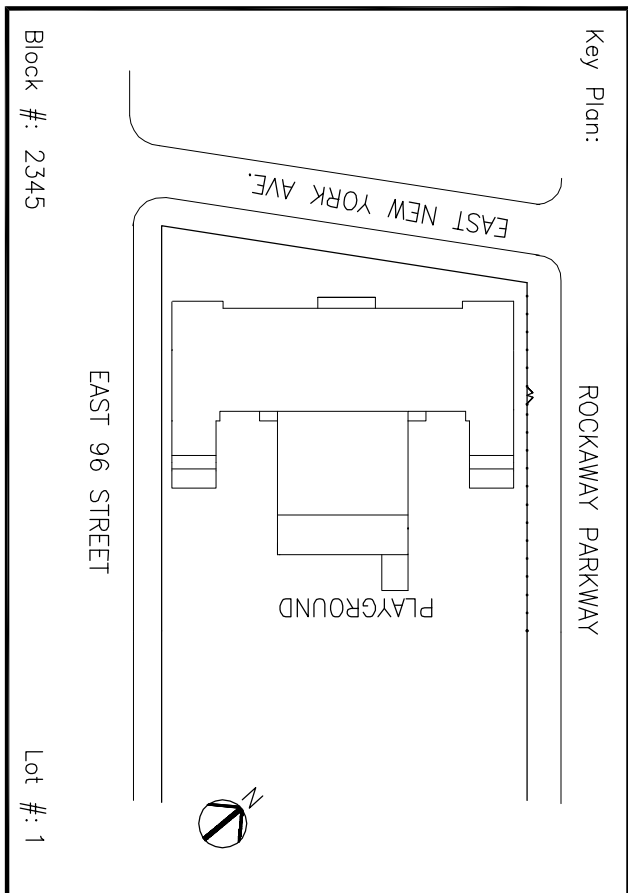


4 TYPICAL LOOSE UNTEL SUPPORT REPAIR DETAIL  
SCALE: 1"=1'-0"



4A SECTION  
SCALE: 1"=1'-0"

100% QC SUBMISSION



SCA Design Manager	S. CROCKA
Project Architect	S. OSHUNNINDE
Designed by:	R. HIGGINS
Drawn by:	T. CULLEY, S. GRISWOLD
Checked by:	R. HIGGINS
CA Project No.:	200817.00
Design No.:	
D# 012259	K 189
Facility Code:	12 / 29 / 2008
Project:	P.S. 189 LINCOLN TERRACE
Address:	PARAPETS EXTERIOR MASONRY
Address:	1100 EAST NEW YORK AVE BROOKLYN, NY 11212

Drawing Title:	UNTEL REPLACEMENT PART PLANS, SECTIONS, NOTES, & DETAILS
Drawing No.:	S-1
Sheets in Contract:	14 of 18