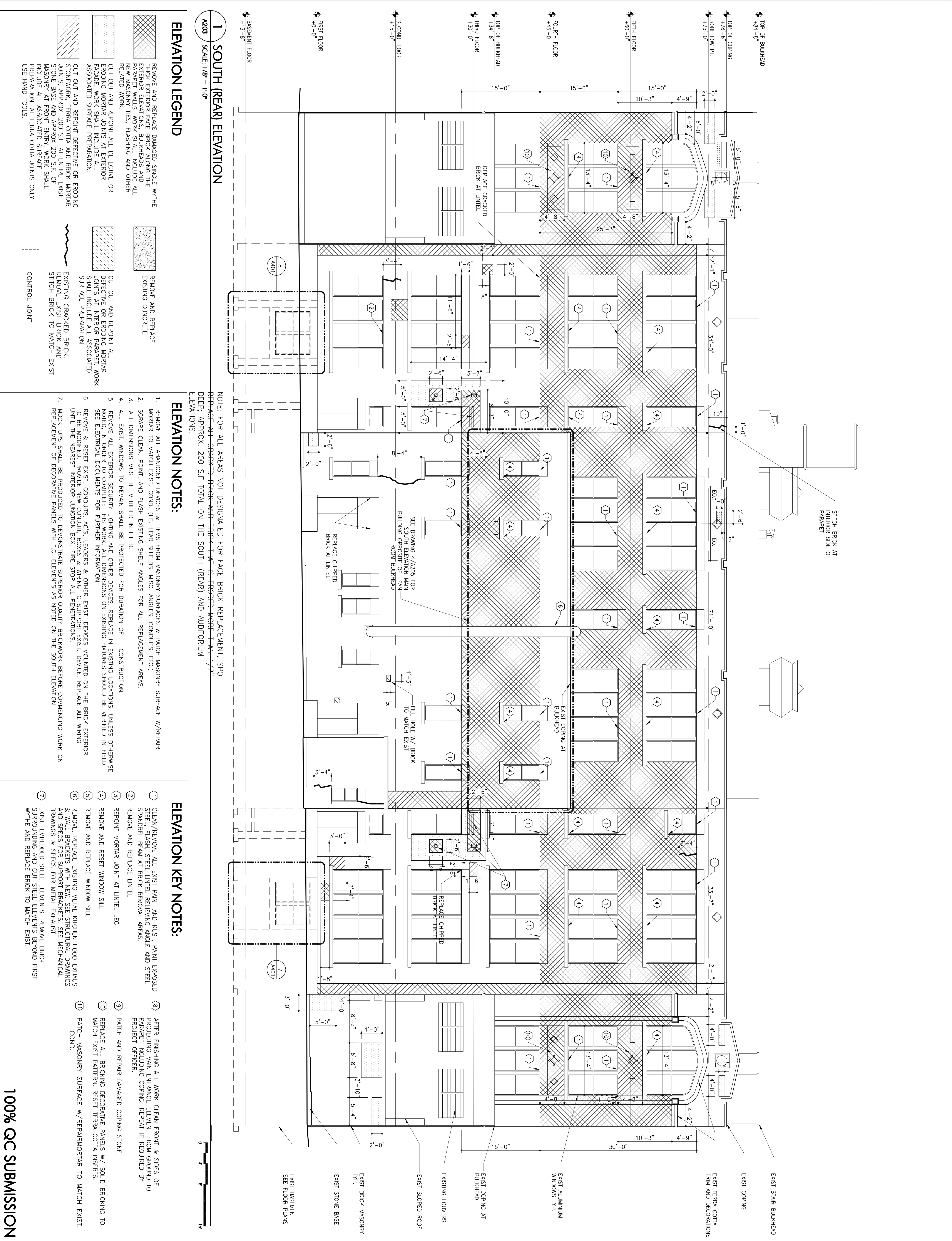


No.		Revision		Date	
Key Plan:		ROCKAWAY PARKWAY		Lot # 1	
SCA Design Manager		S. CROCIATA			
Project Architect:		S. OSUNURUDE			
Designed by:		R. HIGGINS			
Drawn by:		T. CULLEY, S. GRISWOLD			
Checked by:		R. HIGGINS			
CA Project No.:		200817.00			
Design No.:		Facility Code:		Date:	
D# 012259		K 189		12 / 29 / 2008	
Project:		P.S. 189 LINCOLN TERRACE			
Address:		PARAPETS, EXTERIOR MASONRY			
Address:		1100 EAST NEW YORK AVE			
Address:		BROOKLYN, NY 11212			
Drawing Title:		SOUTH (REAR) ELEVATION			
Drawing No.:		A203			
Sheets in Contract:		8 of 18			



1 SOUTH (REAR) ELEVATION
A203
SCALE: 1/8" = 1'-0"

ELEVATION LEGEND

- REMOVE AND REPLACE DAMAGED SINGLE WHITE MORTAR AT EXTERIOR BULKHEADS AND PARAPET WALLS. WORK SHALL INCLUDE ALL NEW MASONRY TIES, FLASHING AND OTHER RELATED WORK.
- CUT OUT AND REPOINT ALL DEFECTIVE OR ERODING MORTAR JOINTS AT EXTERIOR FACADE. WORK SHALL INCLUDE ALL ASSOCIATED SURFACE PREPARATION.
- CUT OUT AND REPOINT DEFECTIVE OR ERODING STONEWORK, TERRA COTTA AND BRICK MORTAR JOINTS, APPROX. 200 S.F. AT EXIST. EXIST. MASONRY AT FRONT ENTRY. WORK SHALL INCLUDE ALL ASSOCIATED SURFACE PREPARATION, AT TERRA COTTA JOINTS ONLY USE HAND TOOLS.
- REMOVE AND REPLACE EXISTING CONCRETE
- CUT OUT AND REPOINT ALL DEFECTIVE OR ERODING MORTAR JOINTS AT INTERIOR PARAPET. WORK SHALL INCLUDE ALL ASSOCIATED SURFACE PREPARATION.
- EXISTING CRACKED BRICK. REMOVE EXIST BRICK AND STITCH BRICK TO MATCH EXIST
- CONTROL JOINT

ELEVATION NOTES:

- REMOVE ALL ABANDONED DEVICES & ITEMS FROM MASONRY SURFACES & PATCH MASONRY SURFACE W/REPAIR MORTAR TO MATCH EXIST. COND. (I.E. LEAD SHIELDS, WISC. ANGLES, CONDUITS, ETC.)
- SCORE CLEAN, POINT, AND FLASH EXISTING SHELF ANGLES FOR ALL REPLACEMENT AREAS.
- ALL EXIST. WINDOWS MUST BE VERIFIED IN FIELD.
- ALL EXIST. WINDOWS TO REMAIN SHALL BE PROTECTED FOR DURATION OF CONSTRUCTION.
- REMOVE ALL EXTERIOR SECURITY LIGHTING AND OTHER DEVICES. REPLACE IN EXISTING LOCATIONS, UNLESS OTHERWISE NOTED. IN ORDER TO COMPLETE THIS WORK, ALL DIMENSIONS ON EXISTING FIXTURES SHOULD BE VERIFIED IN FIELD. SEE ELECTRICAL DOCUMENTS FOR FURTHER INFORMATION.
- REMOVE & RESET EXIST. CONDUITS, ACS, LEADERS & OTHER EXIST. DEVICES MOUNTED ON THE BRICK EXTERIOR TO BE MODIFIED. PROVIDE NEW CONDUIT, BOXES & WIRING TO SUPPORT EXIST. DEVICE. REPLACE ALL WIRING UNTIL THE NEAREST INTERIOR JUNCTION BOX. FIRE STOP ALL PENETRATIONS.
- MOCK-UPS SHALL BE PRODUCED TO DEMONSTRATE SUPERIOR QUALITY BRICKWORK BEFORE COMMENCING WORK ON REPLACEMENT OF DECORATIVE PANELS WITH T.C. ELEMENTS AS NOTED ON THE SOUTH ELEVATION

ELEVATION KEY NOTES:

- CLEAN/REMOVE ALL EXIST. PAINT AND RUST. PAINT EXPOSED STEEL, FLASH, STEEL UNITS, REPAIRING ANGLE AND STEEL SPANDREL BEAM AT BRICK REMOVAL AREAS.
- REMOVE AND REPLACE UNTEL.
- REPOINT MORTAR JOINT AT UNTEL LEG
- REMOVE AND RESET WINDOW SILL
- REMOVE AND REPLACE WINDOW SILL
- REMOVE, REPLACE EXISTING METAL KITCHEN HOOD EXHAUST & WALL BRACKETS WITH NEW. SEE STRUCTURAL DRAWINGS AND SPECS FOR SUPPORT BRACKETS. SEE MECHANICAL DRAWINGS & SPECS FOR METAL EXHAUST.
- EXIST. EMBEDDED STEEL ELEMENTS. REMOVE BRICK SURROUNDING AND CUT STEEL ELEMENTS BEYOND FIRST WYTHE AND REPLACE BRICK TO MATCH EXIST.
- AFTER FINISHING ALL WORK CLEAN FRONT & SIDES OF PROTECTING MAIN ENTRANCE ELEMENT FROM GROUND TO PARAPET INCLUDING COPING. REPEAT IF REQUIRED BY PROJECT OFFICER.
- PATCH AND REPAIR DAMAGED COPING STONE
- REPLACE ALL BRICKING DECORATIVE PANELS W/ SQUID BRICKING TO MATCH EXIST PATTERN. RESET TERRA COTTA INSERTS.
- PATCH MASONRY SURFACE W/REPAIRMORTAR TO MATCH EXIST. COND.

100% QC SUBMISSION